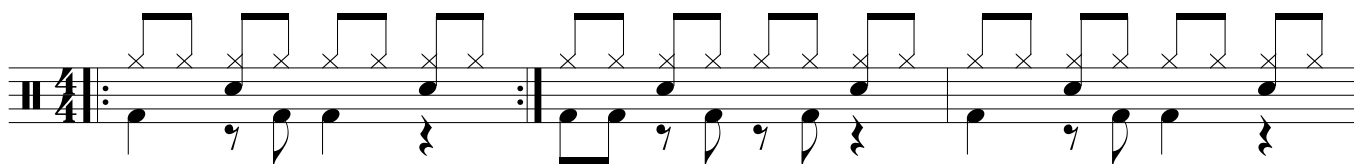


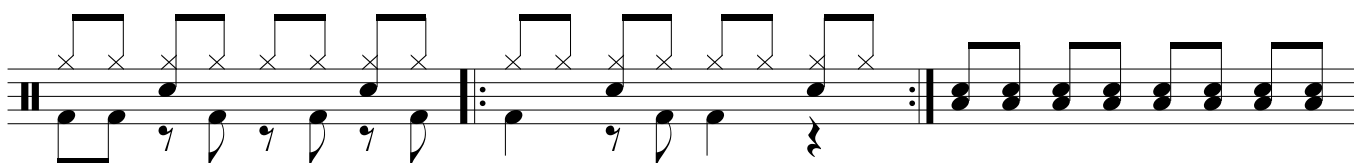
Creedence Clearwater Revival: Have You Ever Seen The Rain?

by Nina Pará

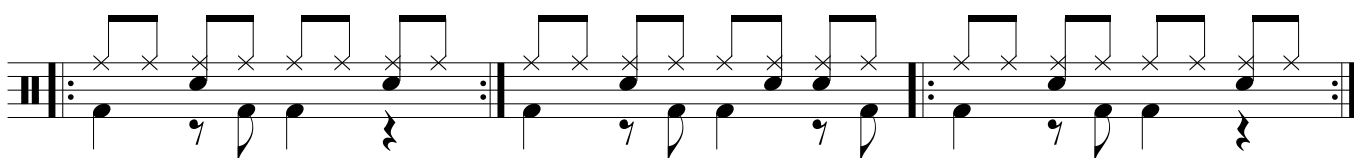
3X



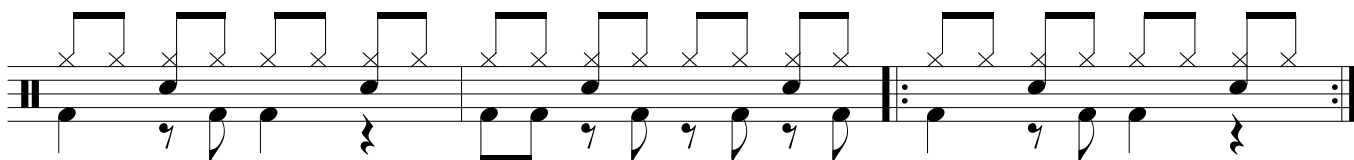
Verso 8X + 7X



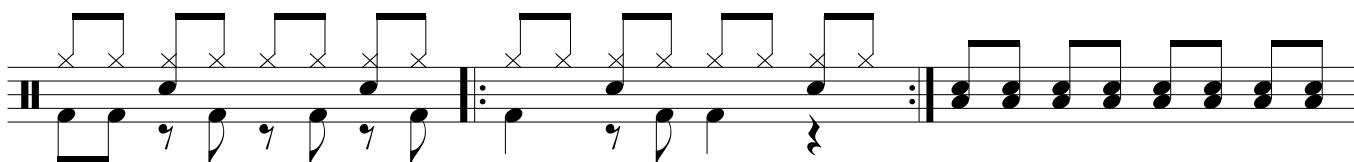
Refrão 2X (3X + 1X) 2X



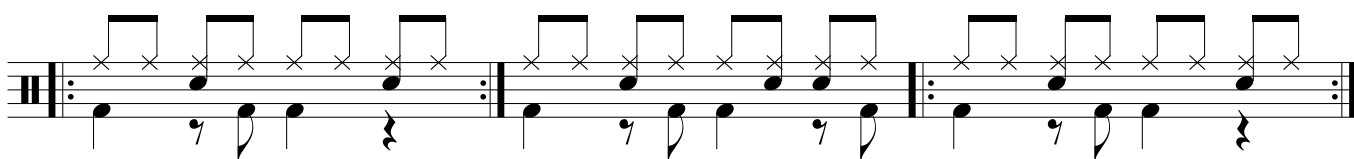
Verso 7X



Verso 7X



Refrão 2X (3X + 1X) 2X



Creedence Clearwater Revival: Have You Ever Seen The Rain?

by Nina Pará

10X

Musical notation for the first system of the song. It consists of two staves. The top staff is a guitar line with a treble clef, featuring a series of eighth-note chords with 'x' marks above them, indicating barre positions. The bottom staff is a bass line with a bass clef, featuring a series of eighth notes and rests.

Musical notation for the second system of the song. It consists of two staves. The top staff is a guitar line with a treble clef, featuring a series of eighth-note chords with 'x' marks above them. The bottom staff is a bass line with a bass clef, featuring a series of eighth notes and rests.

An empty musical staff with a treble clef and a double bar line at the end.

An empty musical staff with a bass clef and a double bar line at the end.

An empty musical staff with a treble clef and a double bar line at the end.

An empty musical staff with a bass clef and a double bar line at the end.